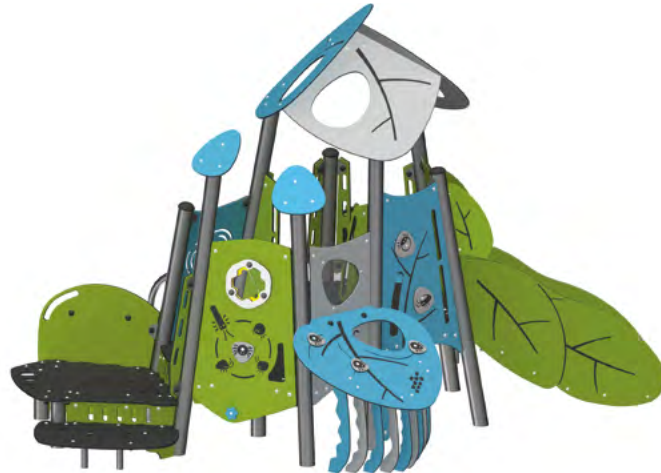


NEW

IMAGINE

Inicio



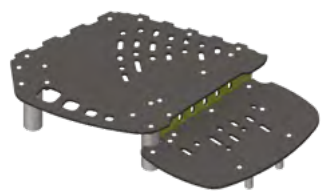
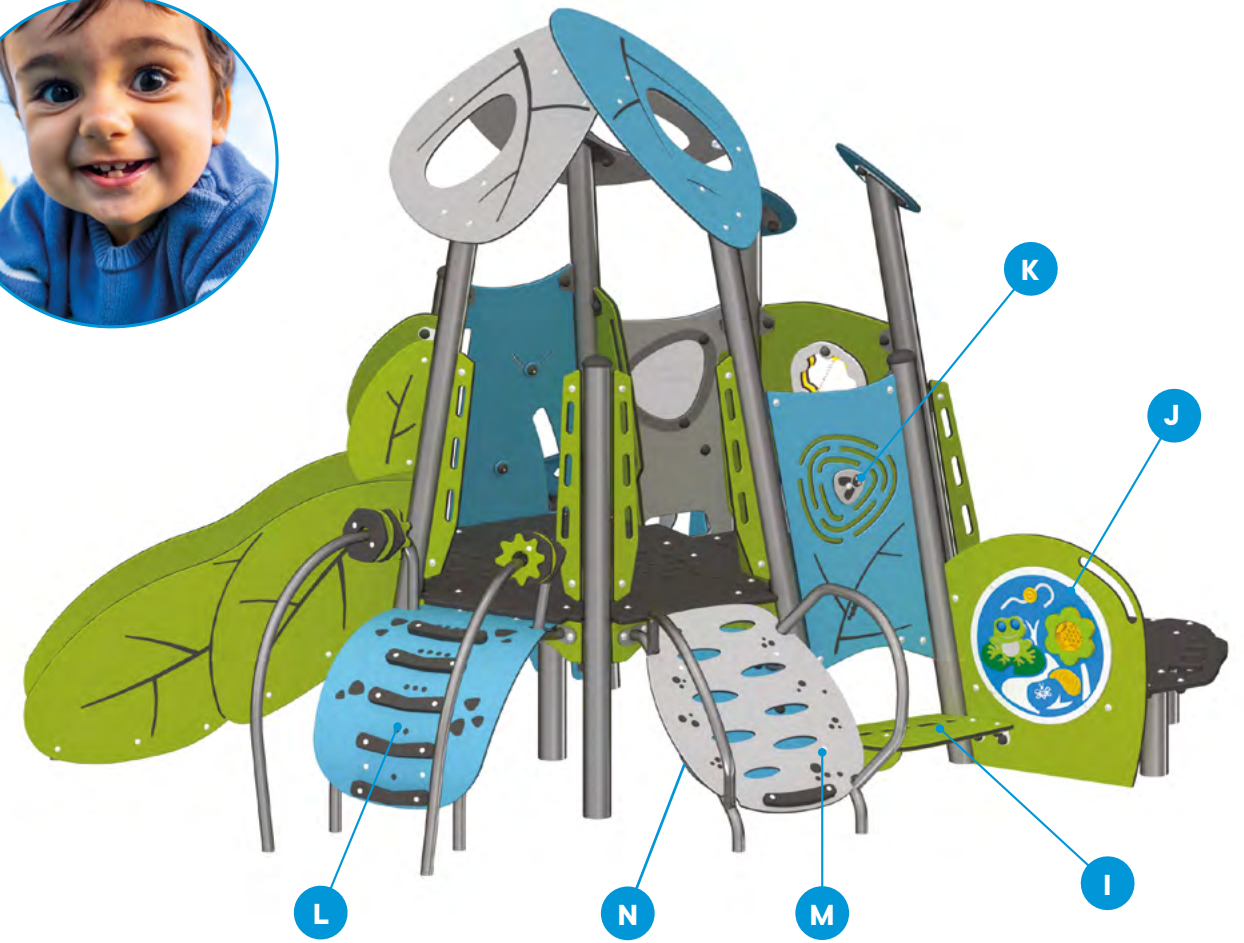
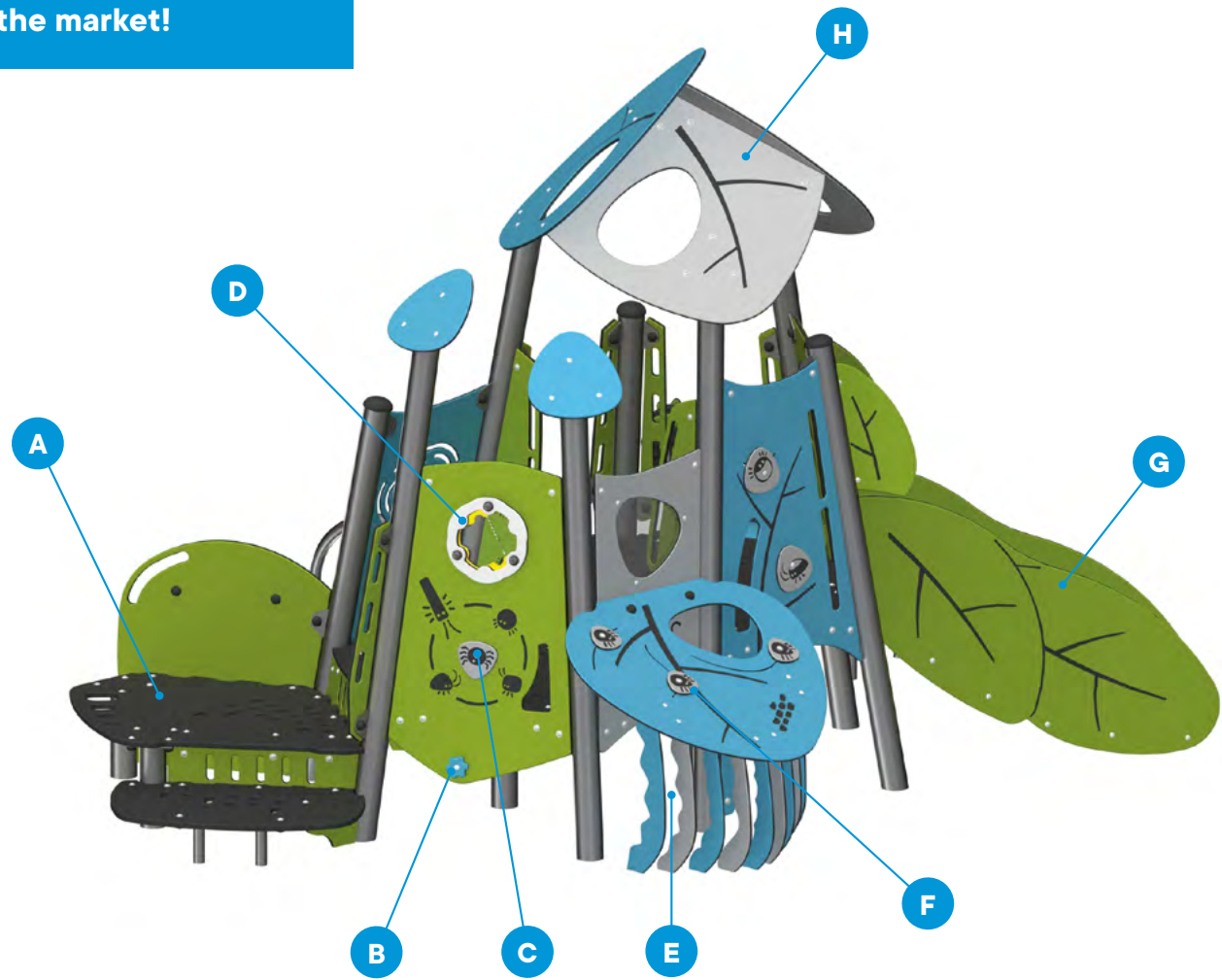
Inicio is the perfect module to develop psychomotricity.

Children will enjoy climbing the structure and getting inside through its large openings in a range of shapes, where they will discover a number of features to enhance their sensory development. And why not complete their experience by sliding down to the ground between huge leaves to start all over again? An adventure of fun and discovery!



Jambette.com

The most complete early childhood module on the market!



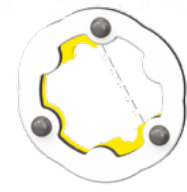
A - Various heights of platforms with transfer station



B - Sensory gear



C - Rotating accessory



D - Game of marbles



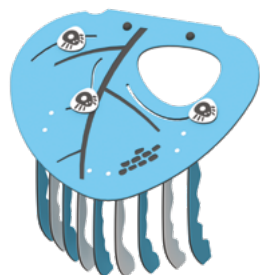
I - Built-in structure bench



J - Sensory panel (frog)



K - Rotating accessory



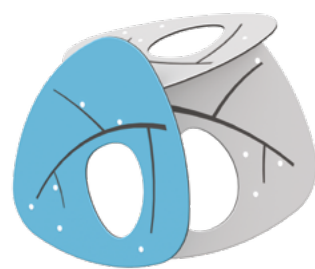
E - Hideout



F - Movable rotating accessory



G - Creatively shaped slide



H - Leaf-theme top



L - Climber with play elements



M - Inclined climber (with mirrors)



N - Set of mirrors

Jambette is second to none in combining modern, maintenance-free and eye-catching materials to design their creative playground products, and Inicio speaks volumes about this reputation.

Using cutting-edge high-density polyethylene (HDPE) panels sets the standard for quality. Coloured in the mass, thick and UV-treated, their durability is undeniable! The structure is supported by aluminum posts that are as sturdy and corrosion-resistant, just like the stainless steel nuts and bolts.

All the accessories, including swivels, washers, rollers and translucent plastic parts are made of maintenance-free materials for long-term adequate use.

MODEL

G-22013

AGE GROUP

18 months to 5 years

CAPACITY

24 children

SURFACE AREA REQUIRED

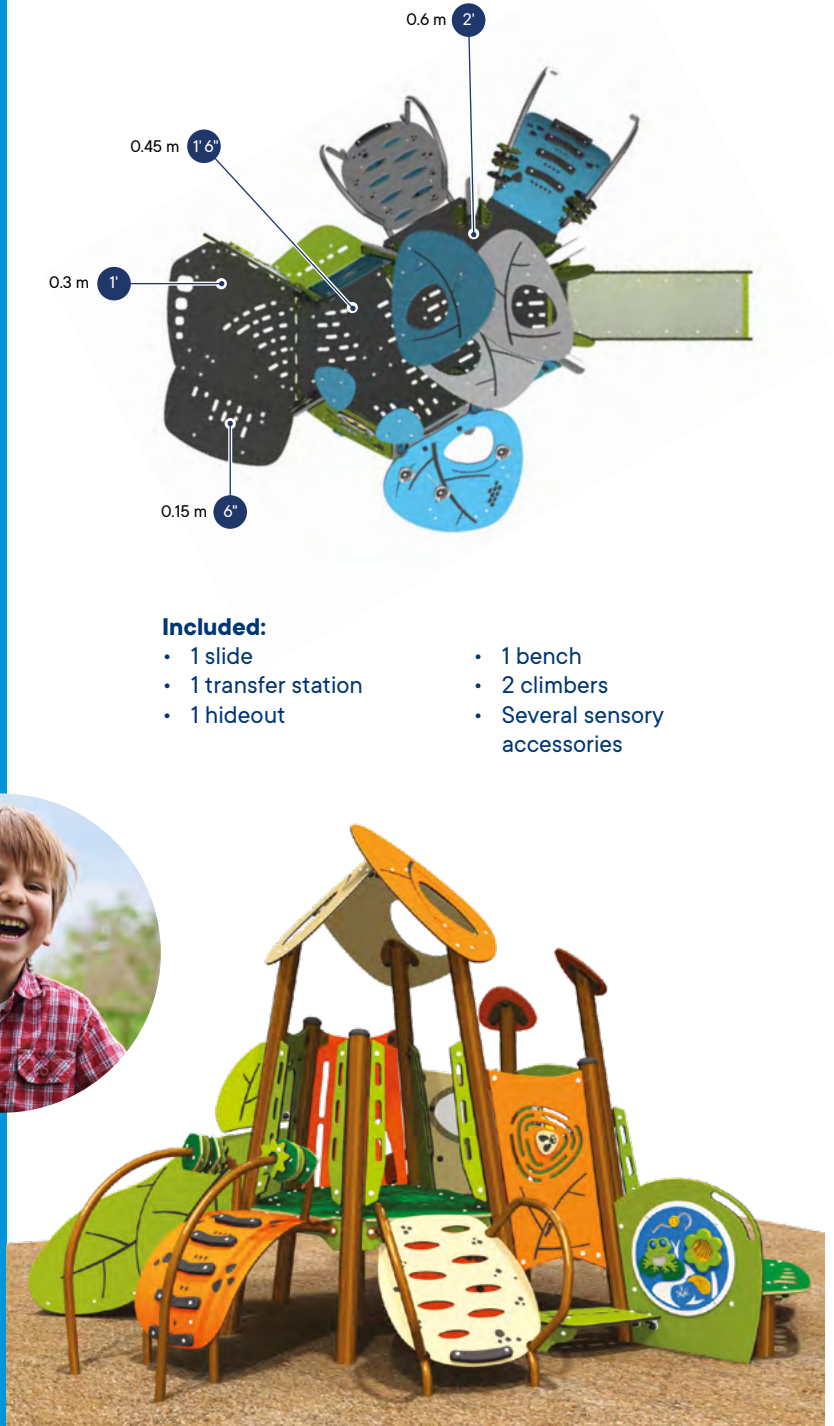
24' x 21' / 7.3 m x 6.4 m

CSA FALL HEIGHT

4' 4" / 1.3 m

ASTM FALL HEIGHT

2' / 0.6 m





Included:

- 1 slide
- 1 transfer station
- 1 hideout
- 1 bench
- 2 climbers
- Several sensory accessories

MATERIALS AND WARRANTIES

- UV-treated, high-density polyethylene (HDPE) panels (10-year warranty)
- Aluminum posts (lifetime warranty)
- Climber guards with steel play elements (15-year warranty)
- Stainless steel hardware (lifetime warranty)
- Slide bedway made of high density polyethylene (HDPE) panels treated against UV rays (10-year warranty)
- Mobile accessories (2-year warranty)

 This logo identifies products that are wheelchair accessible in accordance with Appendix H of the CAN/CSA-Z614 standard and the **Americans with Disabilities Act Accessibility Guidelines (ADAAG)**.

 Based on the CAN/CSA-Z614 standard, installation on a cushioning surface and compliance with clearance distances are required.

1 877 363-2687
jambette@jambette.com

Jambette.COM