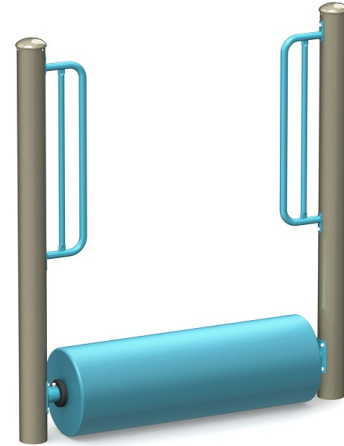




**BASIC FEATURES**

AGE GROUP: 5 to 12 years old  
 FALL HEIGHT (CSA): 69" (1,8m)  
 CHILD CAPACITY: 2 children  
 SHOCK ABSORBING SURFACE (CSA): 16' x 19' (4,9m x 5,8m)



**DESCRIPTION**

A challenge for coordination and balance.

**BODY MOVEMENTS**



**ANCHORING**



**IN CONCRETE**  
 This product is anchored to the ground with concrete columns.

**MATERIALS**

**METALS**

**Post(s):** 6061-T6 aluminum alloy tube measuring 5" (127mm) in outer diameter, with 0.125" wall thickness.  
**Handle(s):** Made of steel tube measuring 1-5/16" (33mm) in diameter.  
**Base:** Steel tube(s) measuring 2-3/8"(60mm) in outer diameter.  
**Hardware:** Made of stainless steel, Anti-vandal type.

**COATINGS**

**Paint:** Z-Series polyester powder, with ultraviolet (UV) rays and weather extreme resistance. (sv)

**PLASTIC MATERIALS**

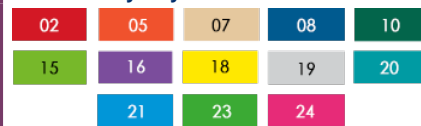
**Casting(s):** Rotomolded UV-stabilized high-density polyethylene (HDPE), colored in the mass. (lv)

**COLOUR CHOICES**

**Aluminum / Steel**



**Molded Polyethylene**



Made at our factory in Lévis, Québec, Canada • Meets CAN/CSA-Z614 and ASTM ASTM F1487