



BASIC FEATURES

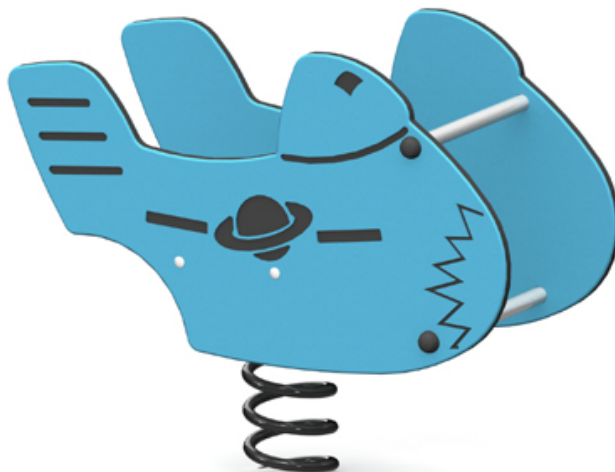
AGE GROUP: 18 months to 5 years old

FALL HEIGHT (CSA): 16" (0,4m) (ASTM): 16" (0,4m)

CHILD CAPACITY: 1 child

DIMENSION (WT x DT x HT): 1'3" x 2'10" x 2'3" (0,4m x 0,9m x 0,7m)

SHOCK ABSORBING SURFACE (CSA): 15' x 17' (4,6m x 5,2m)



DESCRIPTION

Live up your playground with our colourful spring rider. This model of spring rider is always popular with the little ones. Its flat seat, footrest, small diameter handle and high sides make it a perfect fit.

ANCHORING



ON STRINGERS

This product is anchored to the ground by a system of galvanized steel stringers. Some parts of the stringers may be made of recycled plastic.

MATERIALS

PLASTIC MATERIALS

Plate(s) and panel(s): Panels and other plastic parts are made of HDPE polyethylene colored in the mass and treated against UV rays. All edges are rounded for maximum safety.(lv)

Handle(s) and step(s): Made of HDPE polyethylene colored in the mass and treated against UV rays.

METALS

Spring(s): Helical type anti-pinch 5/8" (16mm) diameter rod. Fixing to its ends by heavy-duty brackets.

Hardware: Made of stainless steel, camouflaged by HDPE safety caps.

COATINGS

Paint: Painted metal parts are white blasted first, then coated with a primer and Z-series polyester powder, which has an extreme resistance to ultraviolet (UV) rays and weather. (lv)

Galvanization: Some attachments are hot dipped galvanized.

COLOUR CHOICES

Polyethylene Panels (3/4")



Made at our factory in Lévis, Québec, Canada • Meets CAN/CSA-Z614 • IPEMA Certified