



## BASIC FEATURES

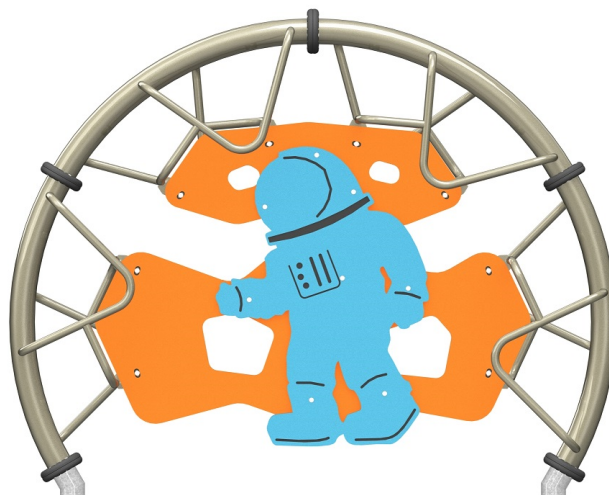
AGE GROUP: 18 months to 12 years old

FALL HEIGHT (CSA): 87" (2,2m) (ASTM): 87" (2,2m)

CHILD CAPACITY: 6 children

DIMENSION (WT x DT x HT): 1'10" x 9'2" x 7'10" (0,6m x 2,8m x 2,4m)

SHOCK ABSORBING SURFACE (CSA): 16' x 24' (4,9m x 7,3m)



## DESCRIPTION

An innovative arch with a variety of handles, allowing children to climb on top or under the structure. Fun guaranteed!

## BODY MOVEMENTS



Climbing  
Intensive (10)



Pulling up  
Intensive (10)



Hanging  
Intensive (10)

## ANCHORING



**ON CONCRETE**  
This product is anchored to the ground with concrete columns.

## MATERIALS

### METALS

**Arched structure(s):** Made of 6065-T6 grade aluminum tube, 5" (127mm) in diameter.

**Hardware:** Made of stainless steel, Anti-vandal type.

### COATINGS

**Paint:** Painted metal parts are white blasted first, then coated with a primer and Z-series polyester powder, which has an extreme resistance to ultraviolet (UV) rays and weather. (lv)

### FLEXIBLE MATERIALS

**Flange Covers:** Made of 82 durometer ultra resistant rubber and treated against UV rays.

## COLOUR CHOICES

### Aluminum / Steel

01	02	04	05	07
08	10	11	12	13
14	16	20	21	22
	23	24		

Made at our factory in Lévis, Québec, Canada • Meets CAN/CSA-Z614 • IPEMA Certified